

REV.	DATE	DESCRIPTION	BY
A	03/26/2025	ISSUED FOR PERMIT	RG



911455 EL CAMINO REAL, SUITE 160 SAN DIEGO, CA 92130



NAD83 NEW YORK STATE PLANES, EAST ZONE, US FOOT

THIS DRAWING IS PRELIMINARY AND IS NOT TO BE USED FOR CONSTRUCTION. FOR REVIEW PURPOSES ONLY & SUBJECT TO CHANGE

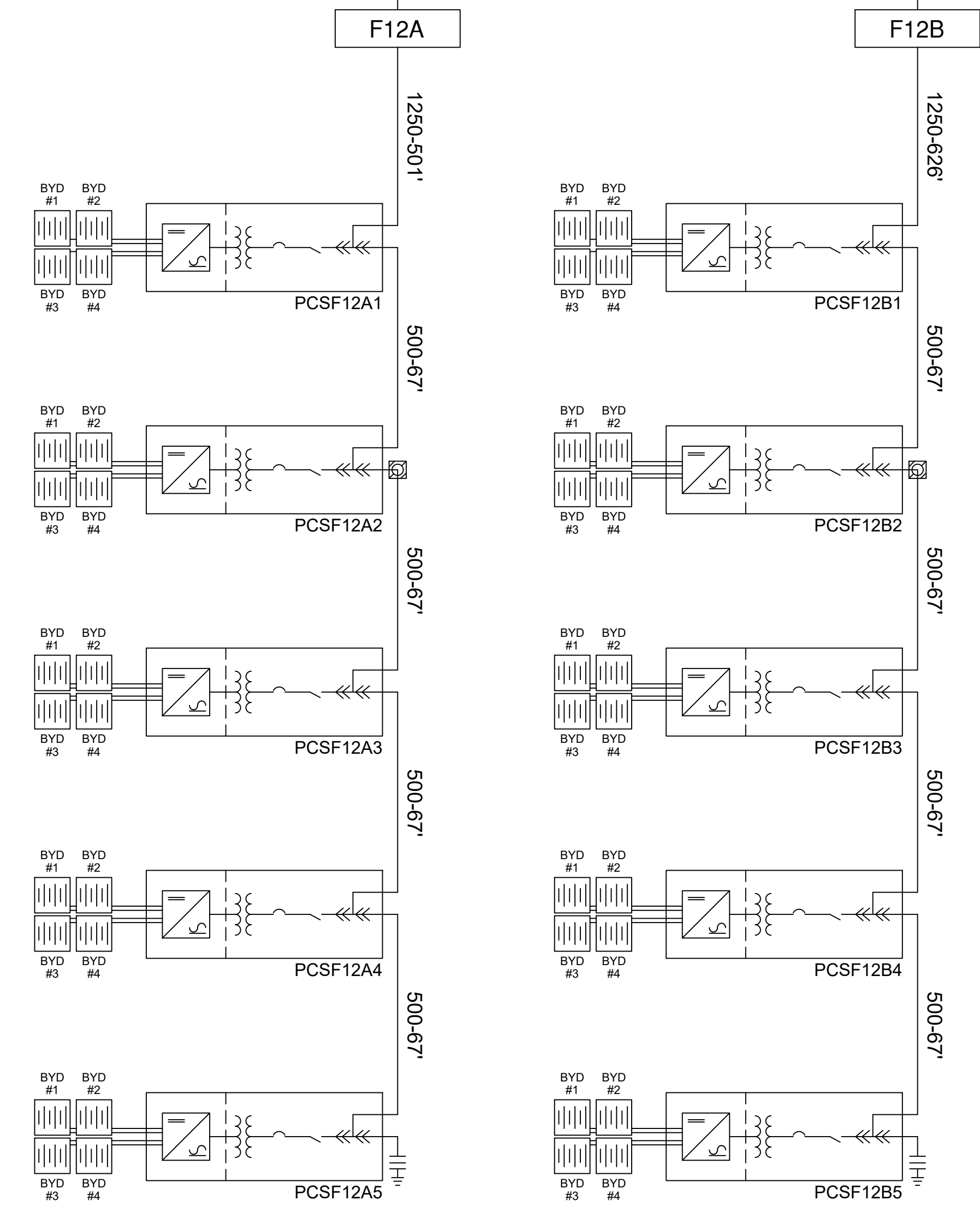
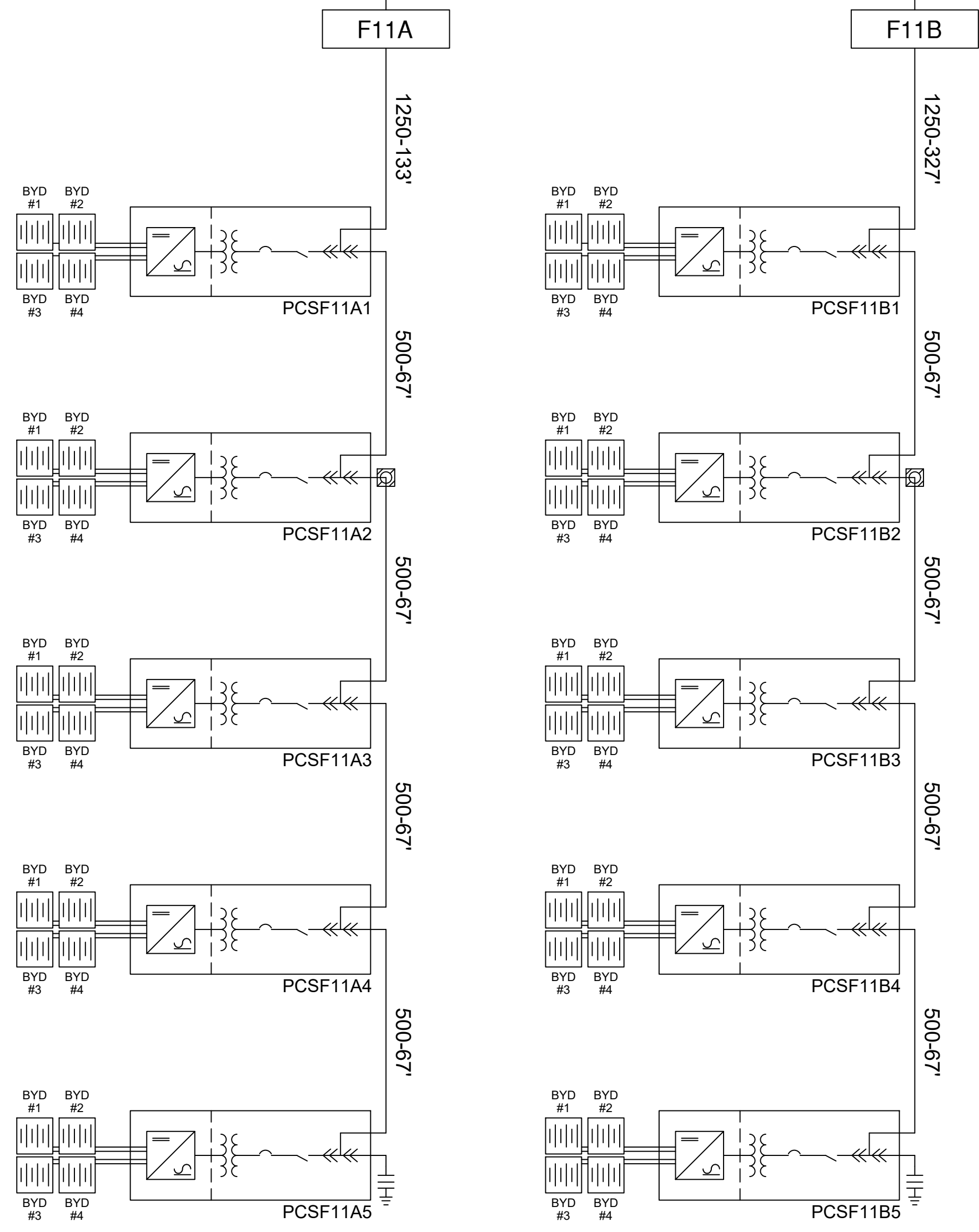
NY ENGINEERING, PLLC

PROJECT NUMBER: 24.04181
 DESIGN BY: NR
 DRAWN BY: NR
 APPROVED BY: RG
 FIRM REG NO: 022381

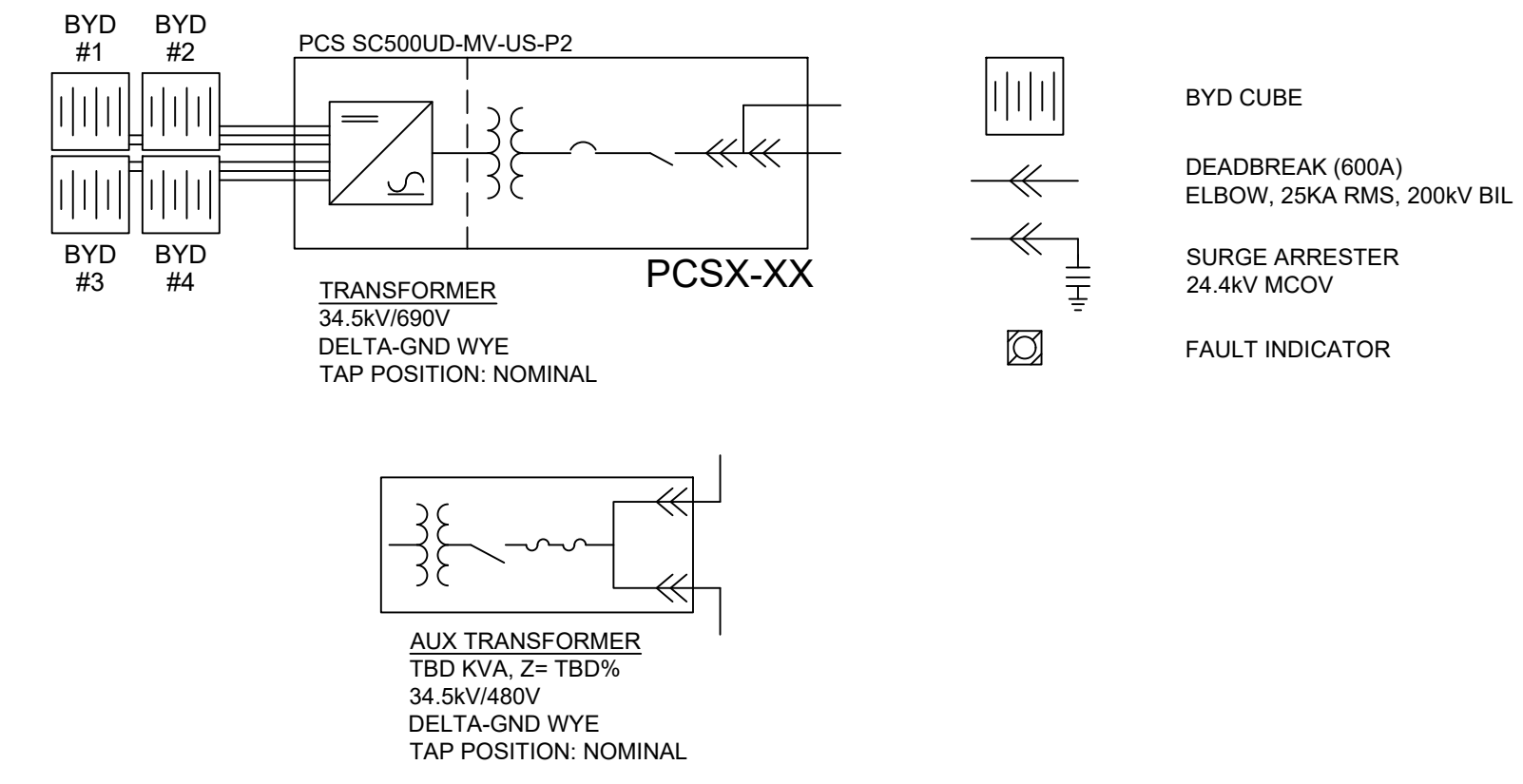
BATTERY ENERGY STORAGE MEDIUM VOLTAGE ONLINE

TO BREAKER 52F11

TO BREAKER 52F12



LEGEND



NOTES

- CABLE LENGTHS LISTED ARE STRAIGHT LINE DISTANCES WITH 15 FEET ADDED TO EACH END AND 15 FEET FOR EACH SUBSTATION RISER. CONTRACTOR TO ADD APPROPRIATE SLACK FOR WASTE, TERMINATIONS AND TERRAIN.
 - ALL EQUIPMENT SHALL BE INSTALLED IN ACCORDANCE WITH NEC, NESC AND ALL APPLICABLE AHJ REQUIREMENTS.
 - ALL 500 KCMIL CABLES BETWEEN PCS'S WILL BE INSTALLED IN 6" SCH. 40 PVC. ALL 1250 KCMIL CABLES BETWEEN PCS'S WILL BE INSTALLED IN 8" SCH. 40 PVC. ALL HOMERUN CABLE IS DIRECT BURIED TO FIRST PCS AND SHALL USE THE CORRESPONDING CONDUIT SIZE LISTED ABOVE FOR EQUIPMENT ENTRY. ALL CABLE UNDER EQUIPMENT SHALL BE IN CONDUIT.
- MV CABLE (35kV, MV-105 XLPE JACKET, UL LISTED):
 1250 KCMIL AL, TBD CN ROUND CONCENTRIC
 500 KCMIL AL, TBD CN ROUND CONCENTRIC
- TRENCH GROUND:
 7-#8 COPPER CLAD STEEL (40%)

©2025 BY NY ENGINEERING, PLLC

REV.	DATE	DESCRIPTION	BY
A	03/26/2025	ISSUED FOR PERMIT	RG



911455 EL CAMINO REAL, SUITE 160 SAN DIEGO, CA 92130



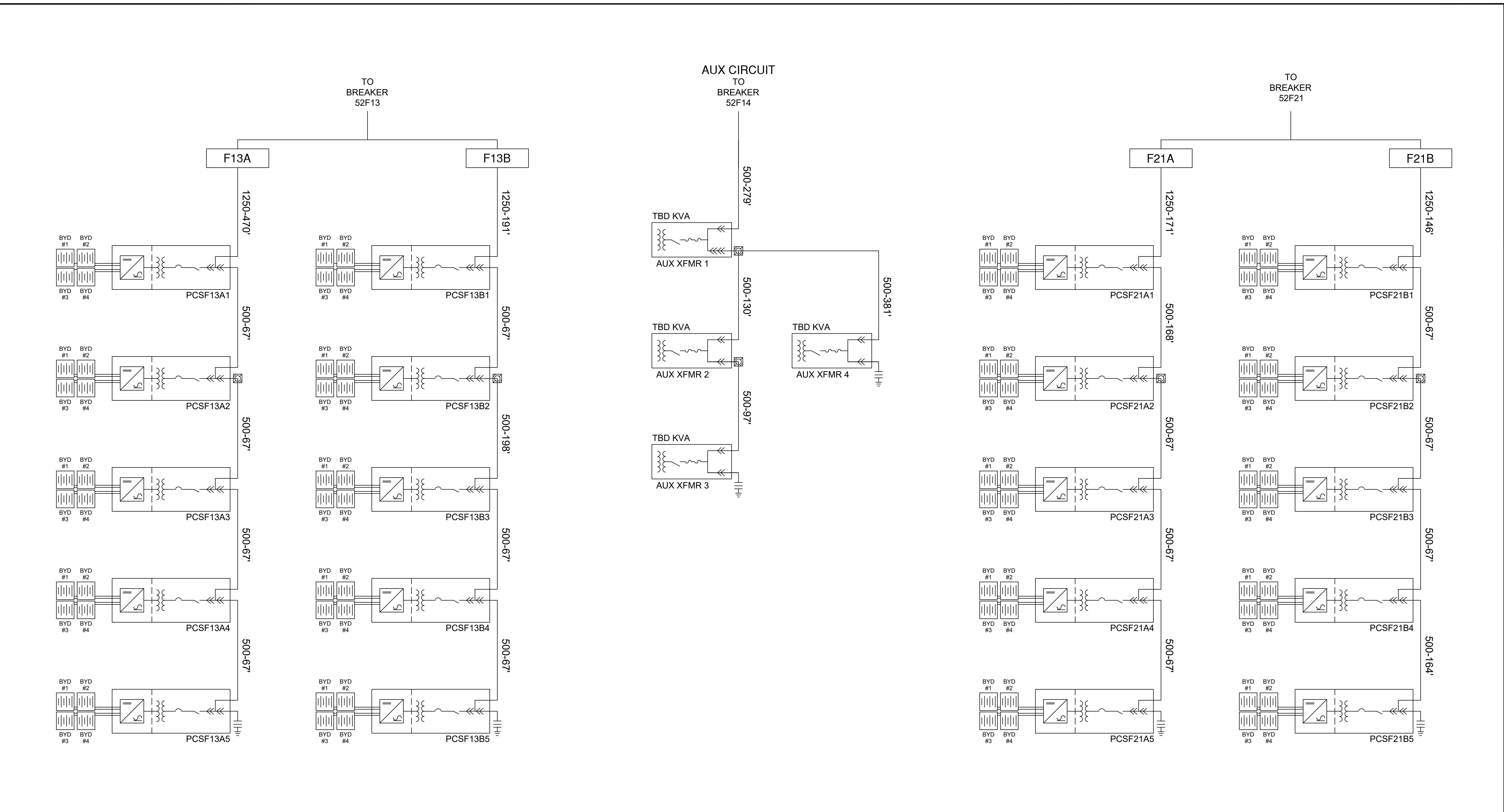
NAD83 NEW YORK STATE PLANES, EAST ZONE, US FOOT

THIS DRAWING IS PRELIMINARY AND IS NOT TO BE USED FOR CONSTRUCTION. FOR REVIEW PURPOSES ONLY & SUBJECT TO CHANGE

NY ENGINEERING, PLLC

PROJECT NUMBER: 24.04181
 DESIGN BY: NR
 DRAWN BY: NR
 APPROVED BY: RG
 FIRM REG NO: 022381

BATTERY ENERGY STORAGE MEDIUM VOLTAGE ONLINE



LEGEND	NOTES
BYD CUBE DEADBREAK (600A) ELBOW, 25KA RMS, 200KV BIL SURGE ARRESTER 24.4KV MCOV FAULT INDICATOR PCS SC500UD-MV-US-P2 <p>TRANSFORMER 34.5KV/690V DELTA-GND WYE TAP POSITION: NOMINAL</p> AUX TRANSFORMER TBD KVA, Z= TBD% 34.5KV/480V DELTA-GND WYE TAP POSITION: NOMINAL	<p>1. CABLE LENGTHS LISTED ARE STRAIGHT LINE DISTANCES WITH 15 FEET ADDED TO EACH END AND 15 FEET FOR EACH SUBSTATION RISER. CONTRACTOR TO ADD APPROPRIATE SLACK FOR WASTE, TERMINATIONS AND TERRAIN.</p> <p>2. ALL EQUIPMENT SHALL BE INSTALLED IN ACCORDANCE WITH NEC, NESC AND ALL APPLICABLE AHJ REQUIREMENTS.</p> <p>3. ALL 500 KCMIL CABLES BETWEEN PCS'S WILL BE INSTALLED IN 6" SCH. 40 PVC. ALL 1250 KCMIL CABLES BETWEEN PCS'S WILL BE INSTALLED IN 8" SCH. 40 PVC. ALL HOMERUN CABLE IS DIRECT BURIED TO FIRST PCS AND SHALL USE THE CORRESPONDING CONDUIT SIZE LISTED ABOVE FOR EQUIPMENT ENTRY. ALL CABLE UNDER EQUIPMENT SHALL BE IN CONDUIT.</p> <p>MV CABLE (35KV, MV-105 XLPE JACKET, UL LISTED): 1250 KCMIL AL, TBD CN ROUND CONCENTRIC 500 KCMIL AL, TBD CN ROUND CONCENTRIC</p> <p>TRENCH GROUND: 7-#8 COPPER CLAD STEEL (40%)</p>

©2025 BY NY ENGINEERING, PLLC

REV.	DATE	DESCRIPTION	BY
A	03/26/2025	ISSUED FOR PERMIT	RG



911455 EL CAMINO REAL, SUITE 160 SAN DIEGO, CA 92130



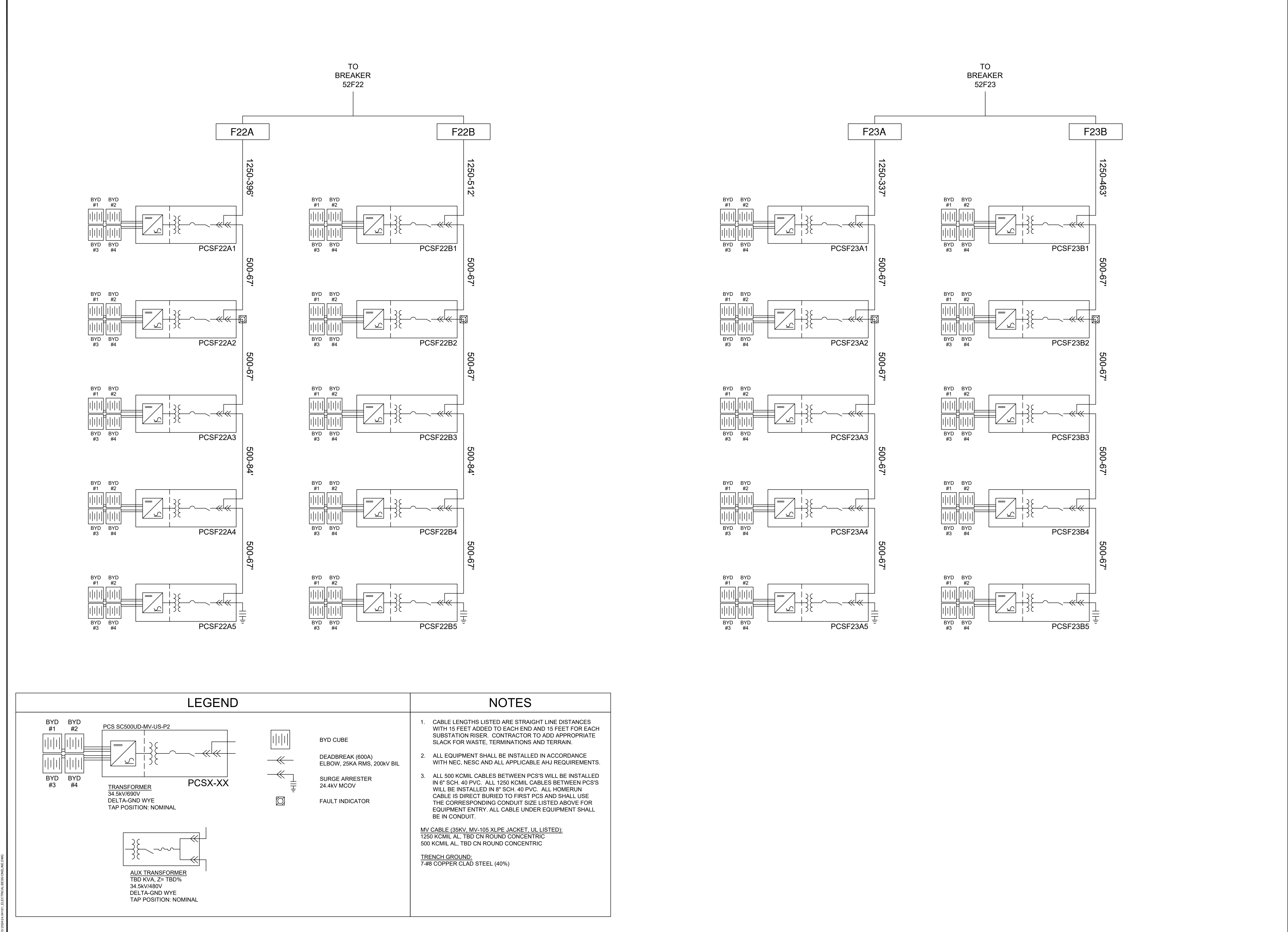
NAD83 NEW YORK STATE PLANES, EAST ZONE, US FOOT

THIS DRAWING IS PRELIMINARY AND IS NOT TO BE USED FOR CONSTRUCTION. FOR REVIEW PURPOSES ONLY & SUBJECT TO CHANGE

NY ENGINEERING, PLLC

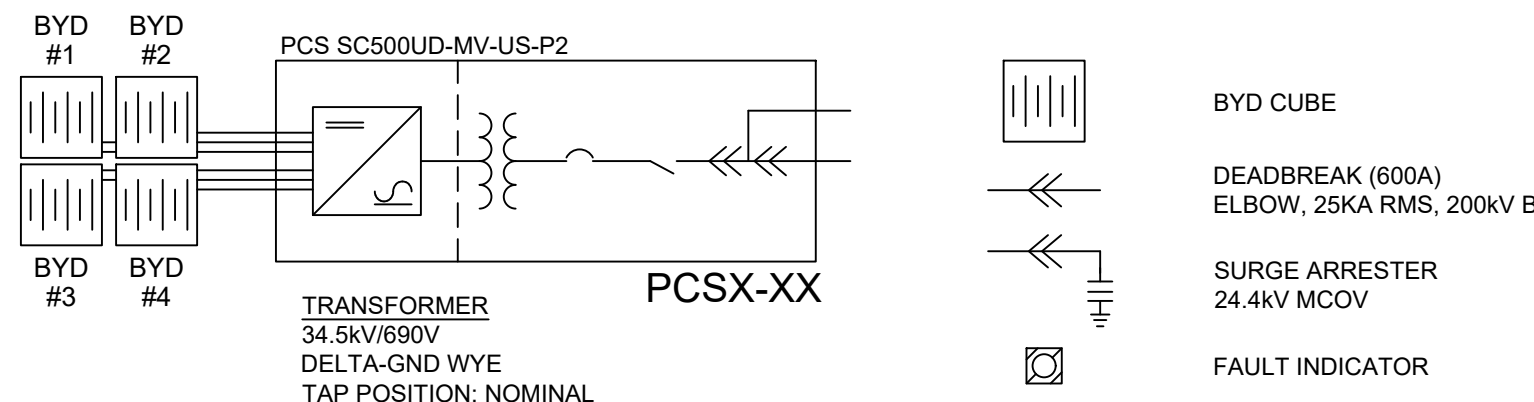
PROJECT NUMBER: 24.04181
 DESIGN BY: NR
 DRAWN BY: NR
 APPROVED BY: RG
 FIRM REG NO: 022381

BATTERY ENERGY STORAGE MEDIUM VOLTAGE ONLINE



LEGEND

NOTES



- CABLE LENGTHS LISTED ARE STRAIGHT LINE DISTANCES WITH 15 FEET ADDED TO EACH END AND 15 FEET FOR EACH SUBSTATION RISER. CONTRACTOR TO ADD APPROPRIATE SLACK FOR WASTE, TERMINATIONS AND TERRAIN.
 - ALL EQUIPMENT SHALL BE INSTALLED IN ACCORDANCE WITH NEC, NESC AND ALL APPLICABLE AHJ REQUIREMENTS.
 - ALL 500 KCMIL CABLES BETWEEN PCS'S WILL BE INSTALLED IN 6" SCH. 40 PVC. ALL 1250 KCMIL CABLES BETWEEN PCS'S WILL BE INSTALLED IN 8" SCH. 40 PVC. ALL HOMERUN CABLE IS DIRECT BURIED TO FIRST PCS AND SHALL USE THE CORRESPONDING CONDUIT SIZE LISTED ABOVE FOR EQUIPMENT ENTRY. ALL CABLE UNDER EQUIPMENT SHALL BE IN CONDUIT.
- MV CABLE (35KV, MV-105 XLPE JACKET, UL LISTED):
 1250 KCMIL AL, TBD CN ROUND CONCENTRIC
 500 KCMIL AL, TBD CN ROUND CONCENTRIC
- TRENCH GROUND:
 7-#8 COPPER CLAD STEEL (40%)

©2025 BY NY ENGINEERING, PLLC